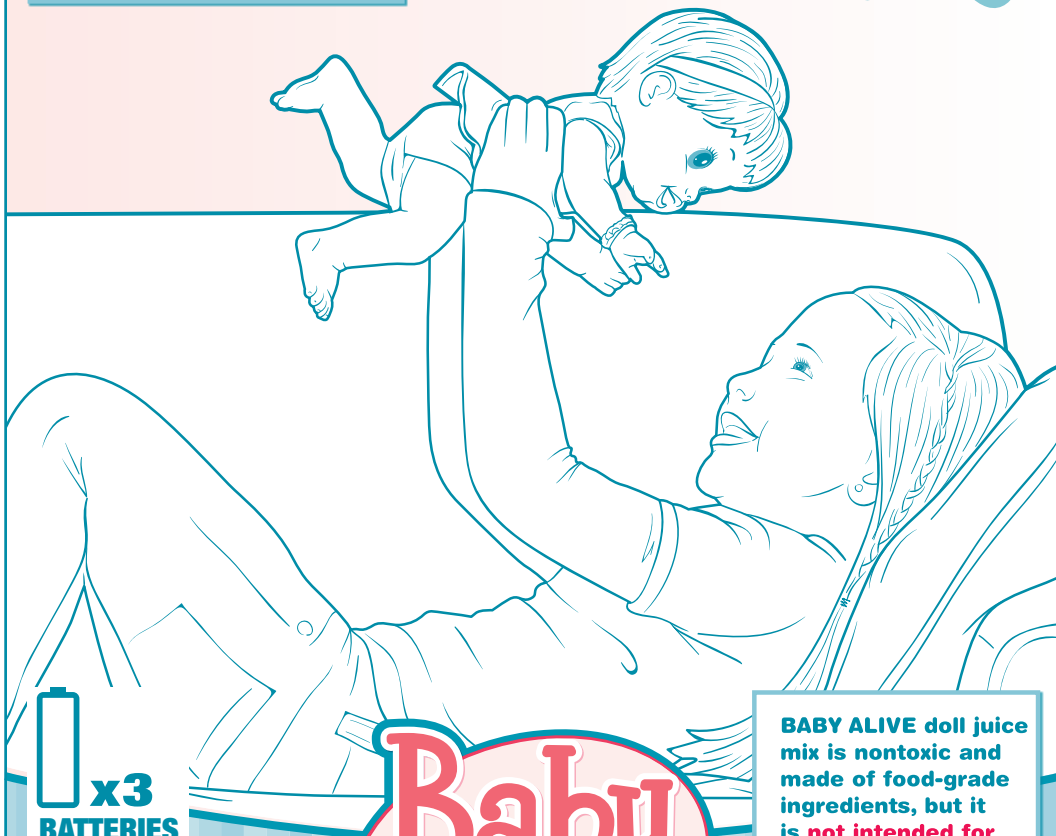
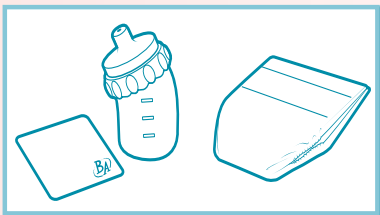


ALSO INCLUDES:



Replace with 3 x 1.5V
"AA" or LR6 size
alkaline batteries.
Phillips/cross head
screwdriver (not
included) needed to
replace batteries.

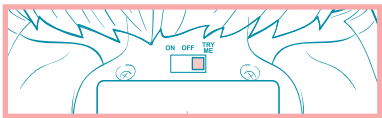
Baby Alive®

BABY ALIVE doll juice mix is nontoxic and made of food-grade ingredients, but it is **not intended for human consumption**. If accidentally ingested, however, it is not harmful. Use **only BABY ALIVE** doll juice mixes with your **BABY ALIVE** doll.

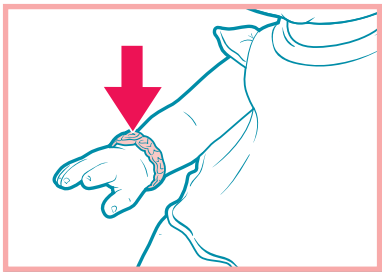
Wets 'n Wiggles™

NOTE TO THE CONSUMER: This doll is packaged in TRY ME mode. When you bring the doll home, move its ON/OFF/TRY ME switch to the ON position.

TO PLAY



First make sure doll's ON/OFF/TRY ME switch is set to **ON**.

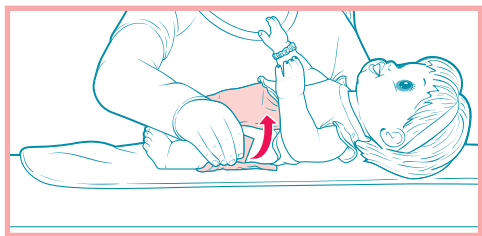


Your baby doll loves to play with you! When you squeeze her bracelet, she kicks her legs, laughs, and makes sounds. When you place the bottle in her mouth, she makes feeding sounds.

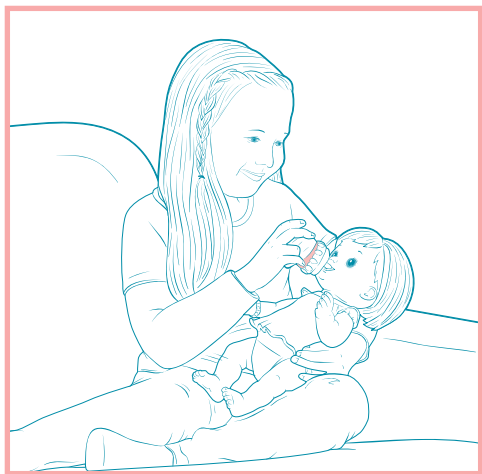
NOTE: To conserve batteries, turn switch to OFF when doll is not to be played with for extended periods of time.

FEEDING TIME

NOTE: Only use BABY ALIVE doll juice mix or plain water to fill your doll's bottle.



1. Before you give your doll a bottle of juice, make sure her diaper is securely fastened.
2. Fill the bottle with **cold, clean water** and 1 packet of doll juice mix.
3. Tighten the bottle top securely.
4. Place the bottle tip in the doll's mouth, and give the bottle **small, gentle squeezes**.



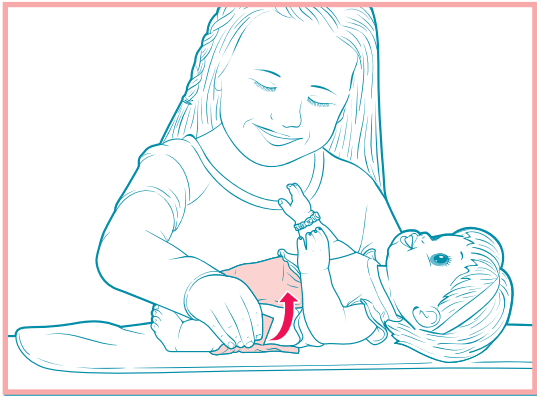
Tip: She's easier to feed when you tilt her head back (as shown).

Listen to the sounds your baby doll makes while you feed her. Can you tell if she wants more juice or if she's full? **ALWAYS** change your doll's diaper and clean her after she drinks.

NOTE: Only give your doll 1 bottle of juice or plain water at a time. It's okay if you only give her half of the bottle!

DIAPER TIME

After giving your doll a bottle of doll juice or water, you'll need to change her diaper!



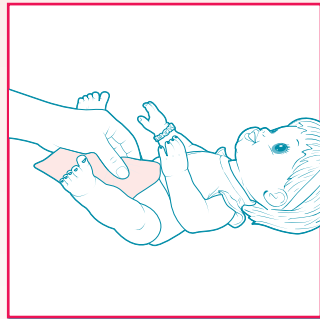
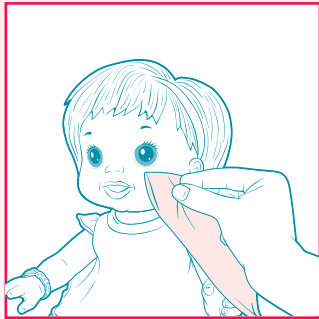
1. Remove the diaper, and wipe the doll clean with a soft, damp cloth or paper towel.*
2. Discard the diaper; it cannot be washed or reused.
3. Put on a new diaper and fasten securely.

*If you have fed the doll using doll juice, follow cleaning instructions below before putting on a new diaper.

TO CLEAN

It is important to clean your doll after feeding her doll juice.

1. Give your doll several bottles of plain water until the water runs clear. (It's best to do this over a sink.)
2. Clean doll's face and body by wiping gently with a soft, damp cloth. Do not rub.



Important Notes About Cleaning Your Doll

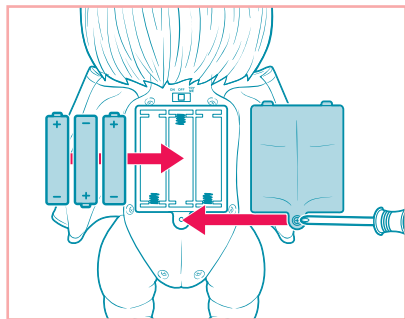
- **STAIN ADVISEMENT:** BABY ALIVE® doll juice mix may stain some surfaces. Adult supervision recommended. If spilled, wash with soap and water.
- Do not submerge doll in water; it is not intended for bath-time play.
- Do not place any foreign objects in doll's mouth or any other opening.
- Doll's clothes are machine-washable (mild detergent, cold water, gentle cycle); they can also be spot-cleaned with a cool damp cloth; hang to dry.
- Hand-wash bottle with mild dish soap and water; it is not dishwasher-safe.

TROUBLESHOOTING

If doll is unresponsive or if sounds become erratic, battery power may be low. Replace the batteries.

TO REPLACE BATTERIES

1. Locate battery compartment on doll's back.
2. Loosen screw on battery compartment door.
3. Remove and discard old batteries.
4. Replace with fresh 3 x 1.5V "AA" or LR6 size alkaline batteries.
5. Replace door and tighten screw (make sure ribbon is clear of seal).



IMPORTANT: BATTERY INFORMATION

⚠ CAUTION:

1. Always follow the instructions carefully. Use only batteries specified and be sure to insert them correctly by matching the + and – polarity markings.
2. Do not mix old batteries and new batteries or standard (carbon-zinc) with alkaline batteries.
3. Remove exhausted or dead batteries from the product.
4. Remove batteries if product is not to be played with for a long time.
5. Do not short-circuit the supply terminals.
6. Should this product cause, or be affected by, local electrical interference, move it away from other electrical equipment. Reset (switching off and back on again or removing and re-inserting batteries) if necessary.
7. **RECHARGEABLE BATTERIES: Do not mix these with any other types of batteries. Always remove from the product before recharging. Recharge batteries under adult supervision. DO NOT RECHARGE OTHER TYPES OF BATTERIES.**

FCC STATEMENT

This device complies with Part 15 of the FCC Rules. Operation is subject to the following two conditions: (1) This device may not cause harmful interference, and (2) this device must accept any interference received, including interference that may cause undesired operation.

NOTE: This equipment has been tested and found to comply with the limits for a Class B digital device, pursuant to Part 15 of the FCC Rules. These limits are designed to provide reasonable protection against harmful interference in a residential installation. This equipment generates, uses and can radiate radio frequency energy, and, if not installed and used in accordance with the instructions, may cause harmful interference to radio communications. However, there is no guarantee that interference will not occur in a particular installation. If this equipment does cause harmful interference to radio or television reception, which can be determined by turning the equipment off and on, the user is encouraged to try to correct the interference by one or more of the following measures:

- Reorient or relocate the receiving antenna.
- Increase the separation between the equipment and receiver.
- Consult the dealer or an experienced radio/TV technician for help.

CAUTION: Changes or modifications to this unit not expressly approved by the party responsible for compliance could void the user's authority to operate the equipment.

Product and colors may vary.

© 2011 Hasbro. All Rights Reserved.

TM & ® denote U.S. Trademarks.

32807 & 35585

PN 7163320000



Questions? Call 1-800-327-8264